

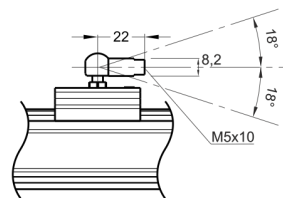
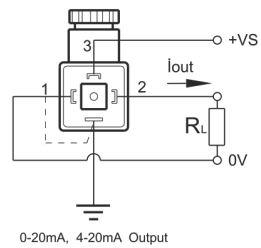
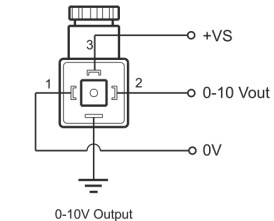
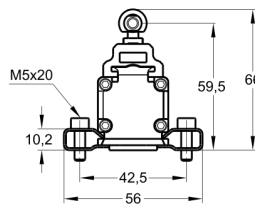
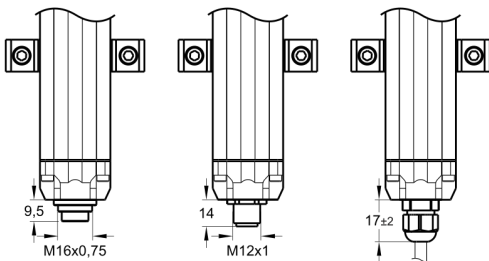
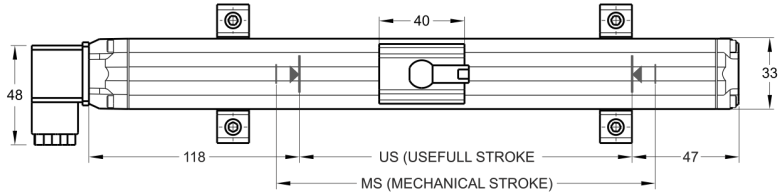
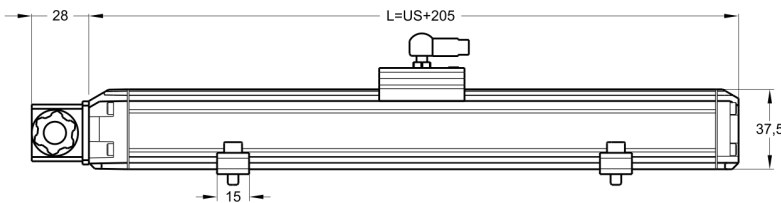
Magnetostrictive Position Sensor

- 100 - 2000 mm measurement stroke
- 16 bit resolution
- Output 0-10V, 4-20mA, 0-20mA
- 24 VDC power supply



Technical Specifications

Measurement Stroke	100 ... 2000 mm
Resolution	16 bit DAC output
Repeatability	±0.005% full scale
Output	0-10, 4-20mA, 0-20mA, 10-0V, 20-4mA, 20-0mA
Power Supply	24 VDC ±10%
Displacement Speed	< 10 m/s
Sampling Rate	1 KHz
Max. Consumption	(50mA - 90mA) depend on stroke
Max. Output Noise	< 5mVpp
Max. Output Value	10.5 Volt
Linearity	±0,02% full scale (min. 100µm)
Update Time	0,5ms up to 100m / 0,8ms up to 2000m
Reverse polarity protection	Up to -30Vdc
Overvoltage protection	Up to 40Vdc



MSW (mm)	100	150	200	250	300	350	400	450	500	550	600	650	700	750	800	850	900	1000	1250	1500	1750	2000
US (Usefull Stroke)	140	190	240	290	340	390	440	490	540	590	640	690	740	790	840	890	940	1040	1290	1540	1790	2040
MS (Mechanical Stroke)	160	210	280	310	360	410	460	510	560	610	660	710	760	810	860	910	960	1060	1310	1560	1810	2060
L (Total Length)	305	355	405	455	505	555	605	655	705	755	805	855	905	955	1005	1055	1105	1205	1455	1705	1955	2205

Model	Measurement stroke	Resolution	Output	Connector / Cable
(example) MSW	300	A	V10	C1
MSW	100 ... 2000mm	A : 16 bit	V10 : 0-10V I 04 : 4-20mA I 20 : 0-20mA	C1 : 4 pin connector C5 : 5 pin connector C8A : 8 pin connector C8B : 8 pin connector 2M5 : 2,5meter cable