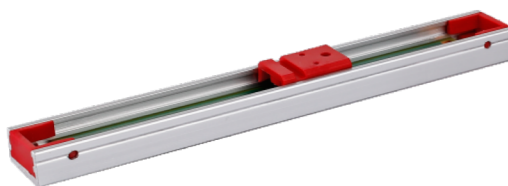


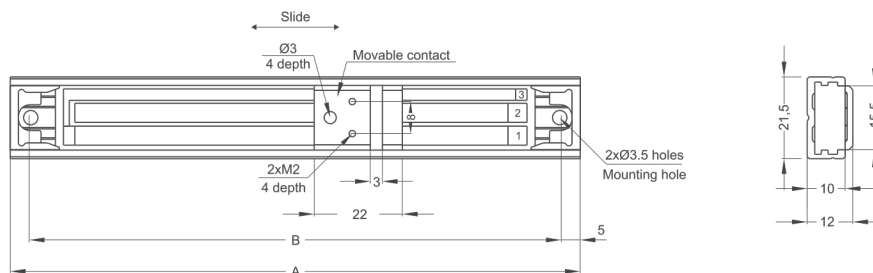
## Linear Potentiometer

- Measuring range 50 - 1000 mm
- Long mechanical life 100 million movement
- Excellent repeatability <0.01 mm
- Infinite resolution
- 5 kOhm : 50 ... 600 mm
- 10 kOhm : 650 ... 1000 mm



### Technical specifications

Measurement stroke	50 to 1000 mm
Linearity	±%0,05 (>200 mm), ±%0,1 (130 - 200 mm), ±%0,2 (75 - 130 mm), ±%0,5 (<75 mm)
Repeatability	< 0.01 mm
Resolution	Infinite
Resistance	5 kOhm : 50 ... 600 mm 10 kOhm : 650 ... 1000 mm
Resistance tolerance	± %20
Load resistance	100 kOhm min.
Recommended cursor current	<1 µA
Permissible applied voltage	28 VDC max.
Displacement speed	< 5 m/s
Mechanical life	100 million movement
Case dimensions	21,5 mm x 10 mm
Case material	Anodized aluminium
Mechanical fixing	Variable brackets
IP degree	IP 65
Operating temperature	-20°C ... +80°C
Storage temperature	-30°C ... +90°C



OPH (mm)	50	100	150	200	250	300	350	400	450	500	550	600	650	700	750	800	850	900	1000
A±1	100	150	200	250	300	350	400	450	500	550	600	650	700	750	800	850	900	950	1050
B±05	90	140	190	240	290	340	390	440	490	540	590	640	690	740	790	840	890	940	1040

Model	Measurement stroke (mm)	Linearity (%)	Resistance (KOhm)
(example) OPH	500	D	5K
OPH	50 ... 1000 mm	D: ±%0,05 (>200 mm), ±%0,1 (130 - 200 mm), ±%0,2 (75 - 130 mm), ±%0,5 (<75 mm)	5K: 5 kOhm 10K: 10 kOhm